

1

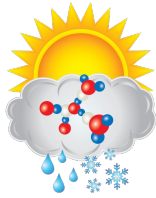
2

3

4

5

6



ASR
Atmospheric
System Research

ARM



Aerosol Influences on Ice Nucleating Particles (INPs) in SAIL

Sonia Kreidenweis, Paul DeMott, Russell Perkins, Thomas Hill, Allison Aiken, Swarup China, Nurun Nahar Lata, Jessie Creamean and Daniel Feldman

U.S. DEPARTMENT OF
ENERGY

2023 ASR/ARM PI Meeting SAIL breakout





ASR
Atmospheric
System Research

Introduction, Background, and Motivation **ARM**

1

2

3

4

5

6

- Using measurements of ice nucleating particles (INPs) and other aerosols conducted during the ARM Surface Atmosphere Integrated Field Laboratory (SAIL) campaign, we seek to understand seasonal INP influences on cloud and precipitation properties within the SAIL mountain watershed. Through extension, we will seek numerical representations applicable for use in aerosol-cloud interaction studies for other western U.S. mountain regions that are so critical for water supplies.



ASR Goals and Objectives

Atmospheric
System Research



1

2

3

4

5

6

- Connect a comprehensive investigation of ice nucleating particle (INP) concentrations, compositions and inferred sources measured during the Atmospheric Radiation Measurement (ARM) program's Surface Atmosphere Integrated field Laboratory (SAIL) campaign (18 months) with size-resolved aerosol collections to be analyzed on a single particle basis at EMSL.
- **DOE relevance:** How do aerosol properties influence glaciation processes active in clouds, with links to climate and hydrology?
- **Anticipated outcomes:** Synthesized descriptions of INP populations and their relationships to ambient aerosols, and their use for collaborative numerical modeling studies of aerosol-cloud-precipitation interactions



ASR Atmospheric System Research

Approach, Method, or Experiment Plan

ARM

1

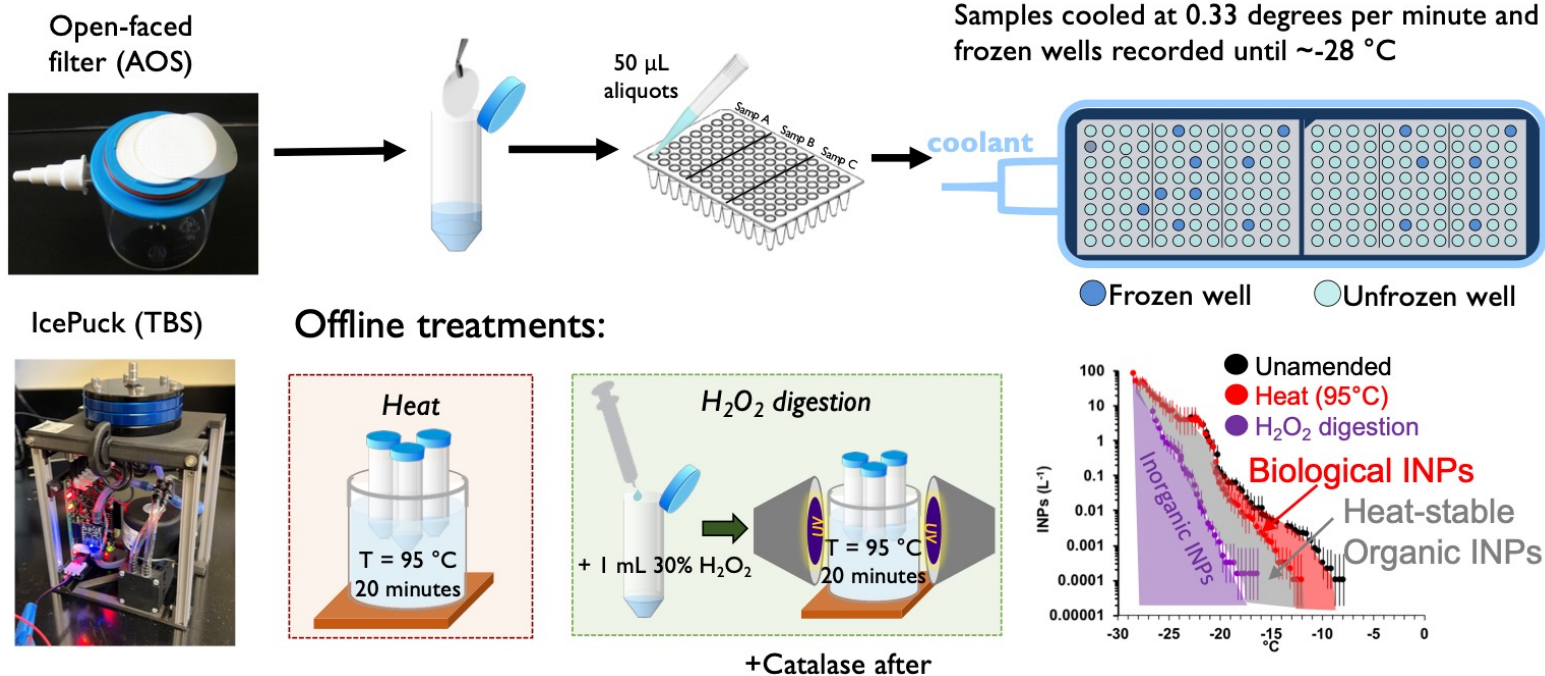
2

3

4

5

6





1

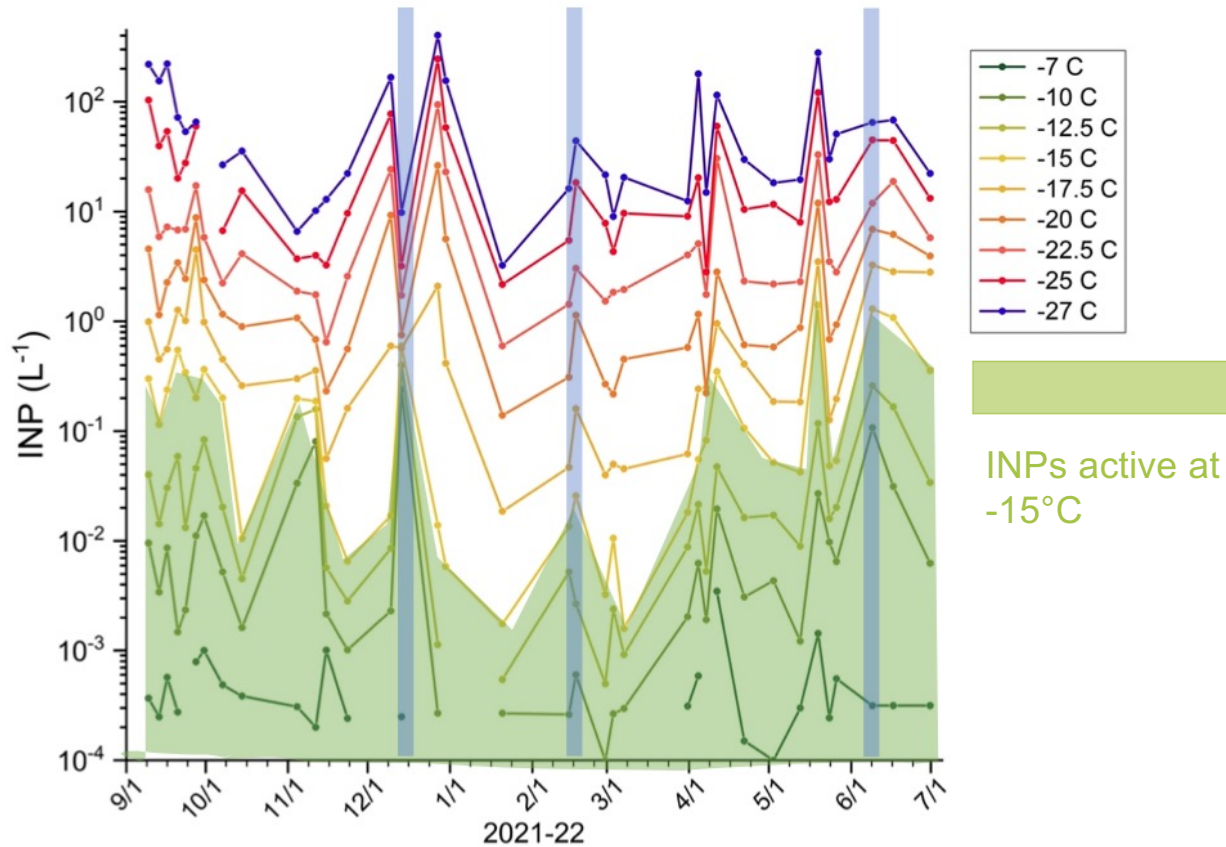
2

3

4

5

6

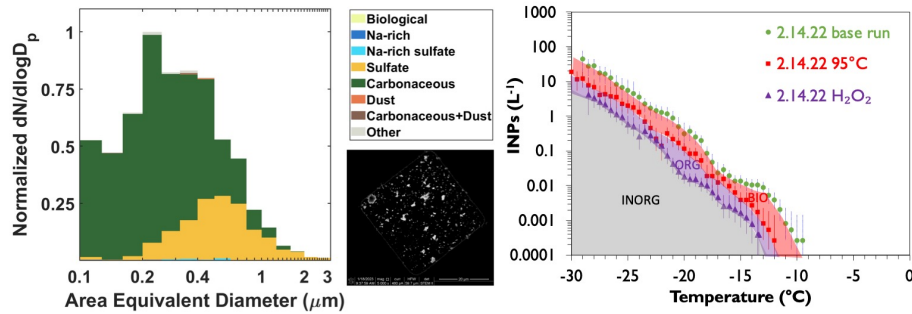


Diverse annual cycle present in processed AOS data from 2021-2022. Apparent active biological INPs present in warm season (Spring to Fall) but mostly absent in Winter. Greater than 1 order of magnitude variability in INPs at any temperature over the year.

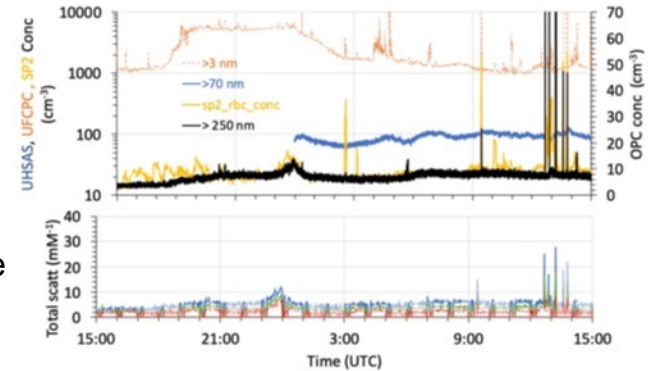


Results and Discussion: Assembling case studies (mid-Winter and late Spring here)

1



Typical winter was low dust and INPs from some type of other mostly organic particle type (biomass burning?).

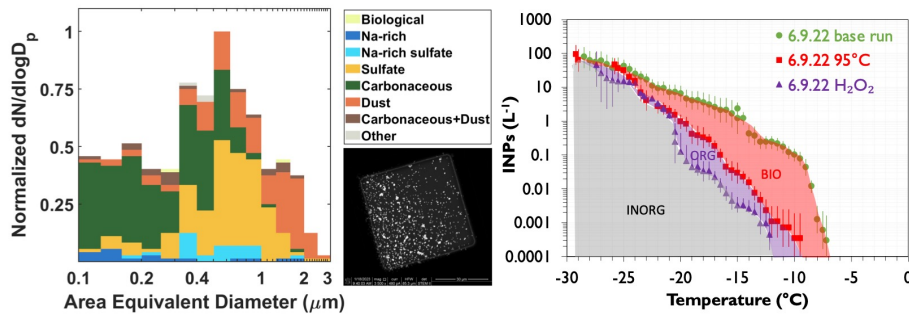


Dark traces are PM10 (light is PM1) for 700, 550, and 450 nm

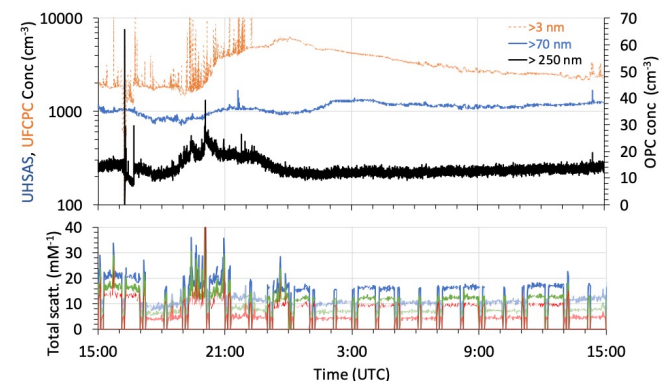
2

3

4



Typical warm season had apparent arable dust influences and biological INPs during plant growth.



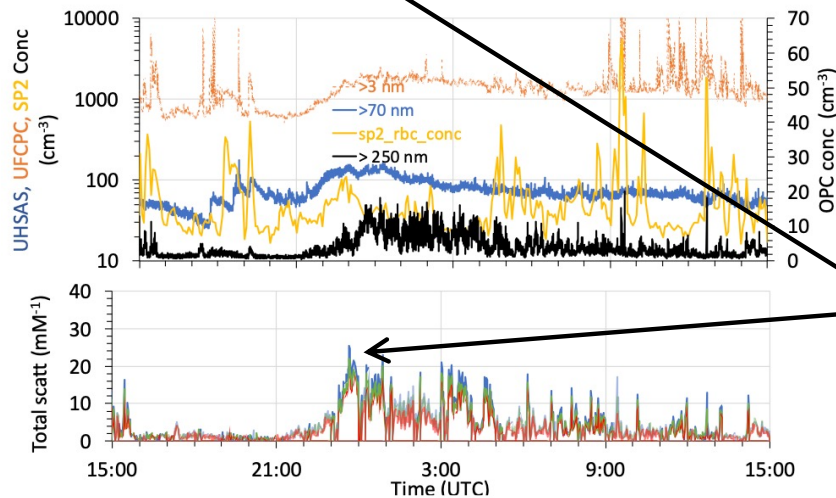
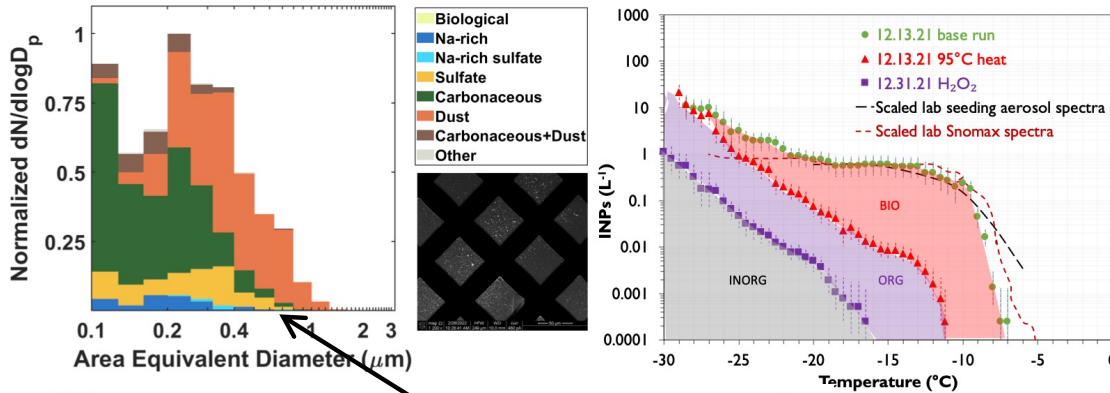
5

6



ASR
Atmospheric
System Research

Will the local influences of cloud seeding and snowmaking be detectable? Challenging.



Look for winter periods with unexpected INP spectral signatures. This one could be explained by a regional dust incursion, or snowmaking adding bio-INPs via Snomax used in snowmaking machine water. The spectra also looks like that expected from the regional cloud seeding network, but **seeding generators were not operating on this day.**

Conundrum: Would snowmaking have commenced at 4 pm and ended by 8pm? Dust in STAC analysis suggests this was a short transport event, although 1 biological particle in 1000 overall particles analyzed could still explain 1 per liter INPs acting like Snomax.



ASR Acknowledgements

Atmospheric
System Research

1

- *This research was supported by the U.S. Department of Energy's Atmospheric System Research, an Office of Science Biological and Environmental Research program (BER), under **DE-SC0021116**.*
- *Data were obtained from the **Atmospheric Radiation Measurement (ARM) User Facility**, a U.S. Department of Energy (DOE) Office of Science user facility managed by BER.*
- *We also acknowledge support from the **Environmental Molecular Sciences Laboratory User Facility LSR grant 60299** and **FICUS grant 60379**.*

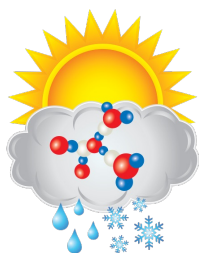
2

3

4

5

6



ASR

Atmospheric
System Research

